

E K A A W A A S S A B K E P A A S



AASTHA

A p a r t m e n t s

एक आवास सबके पास

1 BHK & 2 BHK APARTMENTS

ANSAL API

Building lifestyles since 1967

Ansal API, a success story that started way back in 1967. Built on a commitment to radically improve the lifestyle of our fellow countrymen, we constantly strive to surpass even our own lofty standards.

Our townships, commercial centres, retail spreads stand as testimony to this very commitment. Today we are in the process of developing projects, the aggregate valuation of which stands at a staggering Rs.26,000 crores.



Actual photograph of Sushant Golf City, Lucknow

The Most Celebrated Township

Welcome to Sushant Golf City Lucknow, a Hi-tech residential township sprawling across 1765 acres. Located on Sultanpur Road, this extremely well-planned township is extendable upto 6,000 acres. This beautiful township has a world-class international standard golf course surrounded with residential and commercial areas, making the life on greens a reality. Luxury villas, designer landscaping, state-of-art infrastructure, excellent entertainment, healthcare facilities. Everything here is specially designed to excel even under the most discerning eye.

Introducing



Aastha Apartments- Your Home

Convenient and Comfortable Residential Solutions - Aastha (1 bedroom & 2 bedroom) Apartments enveloped in comfort and convenience. Living in Aastha Apartments, will be an enriching experience. From infrastructure to recreational facilities, breathtaking environs to securities, everything will be at par with world-class standards. To keep pace with the latest global trends in town planning, there will be a perfect blend of lifestyle, enjoyment, amenities and green environs.



Aastha Apartments

- 1 Bedroom & 2 Bedroom apartments
- Structure conforming to seismic codes
- Landscaped greens
- Securitized planning with regulatory entry and exit
- Ample open areas
- Walkways
- Apartment with optimum space management
- Surface parking
- Neighborhood Shopping Area in the vicinity
- Private balconies in each Apartments
- Low pollution level

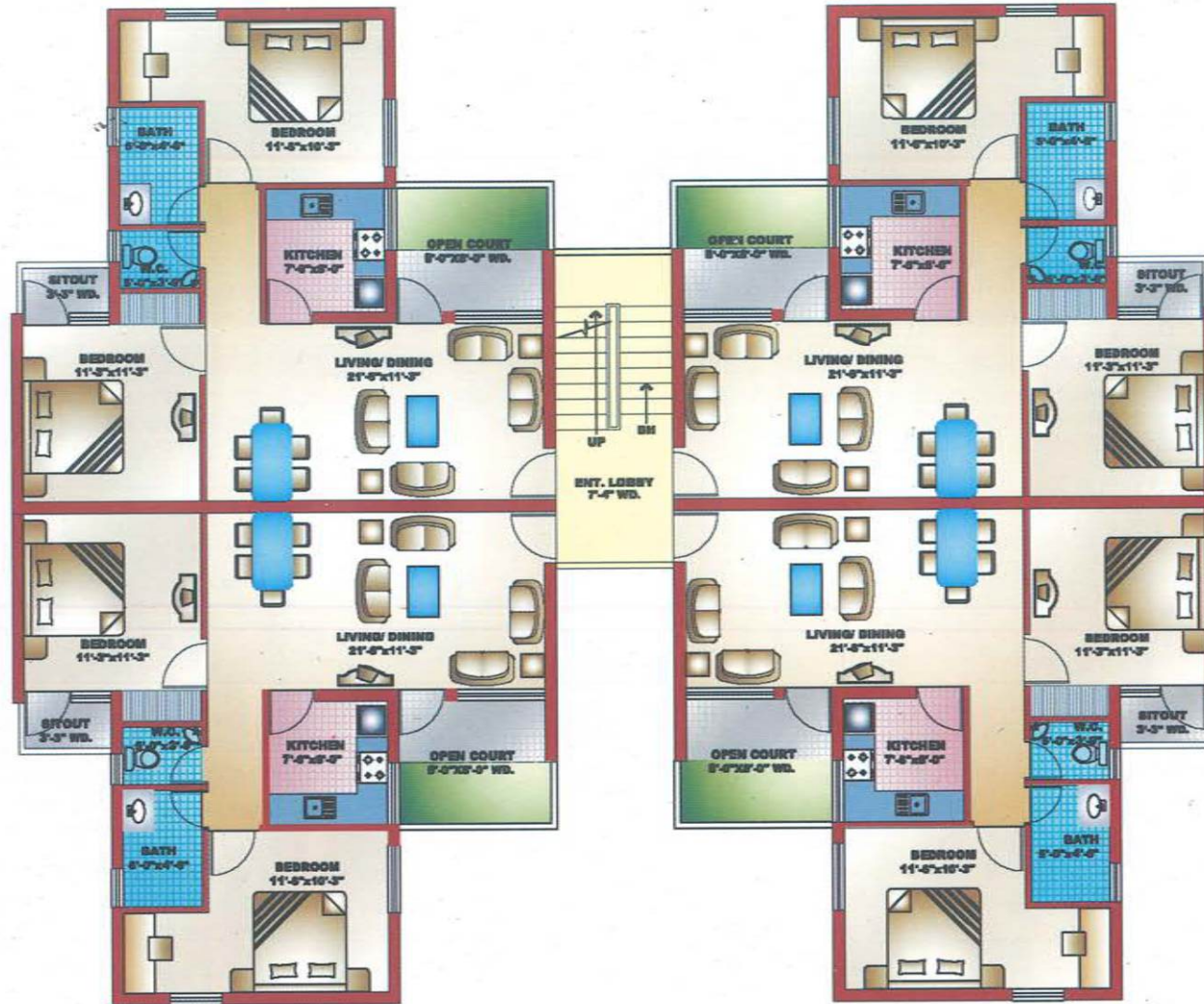




Amenities Galore at Sushant Golf City, Lucknow

- 18 holes International Standard Golf Course designed by Dr. Martin Hawtree, U.K.
- Mahesh Bhupati Tennis Academy
- Educational Institutions
- Healthcare Facilities
- Hotels
- The Royal Palms Golf & Country Club
- Golf club with residential suites
- IT & Bio-Tech Parks
- Petrol Pumps
- Post and Telegraph Office

TOTAL SALE AREA OF ONE UNIT=83.18 SQM (895 SQFT)

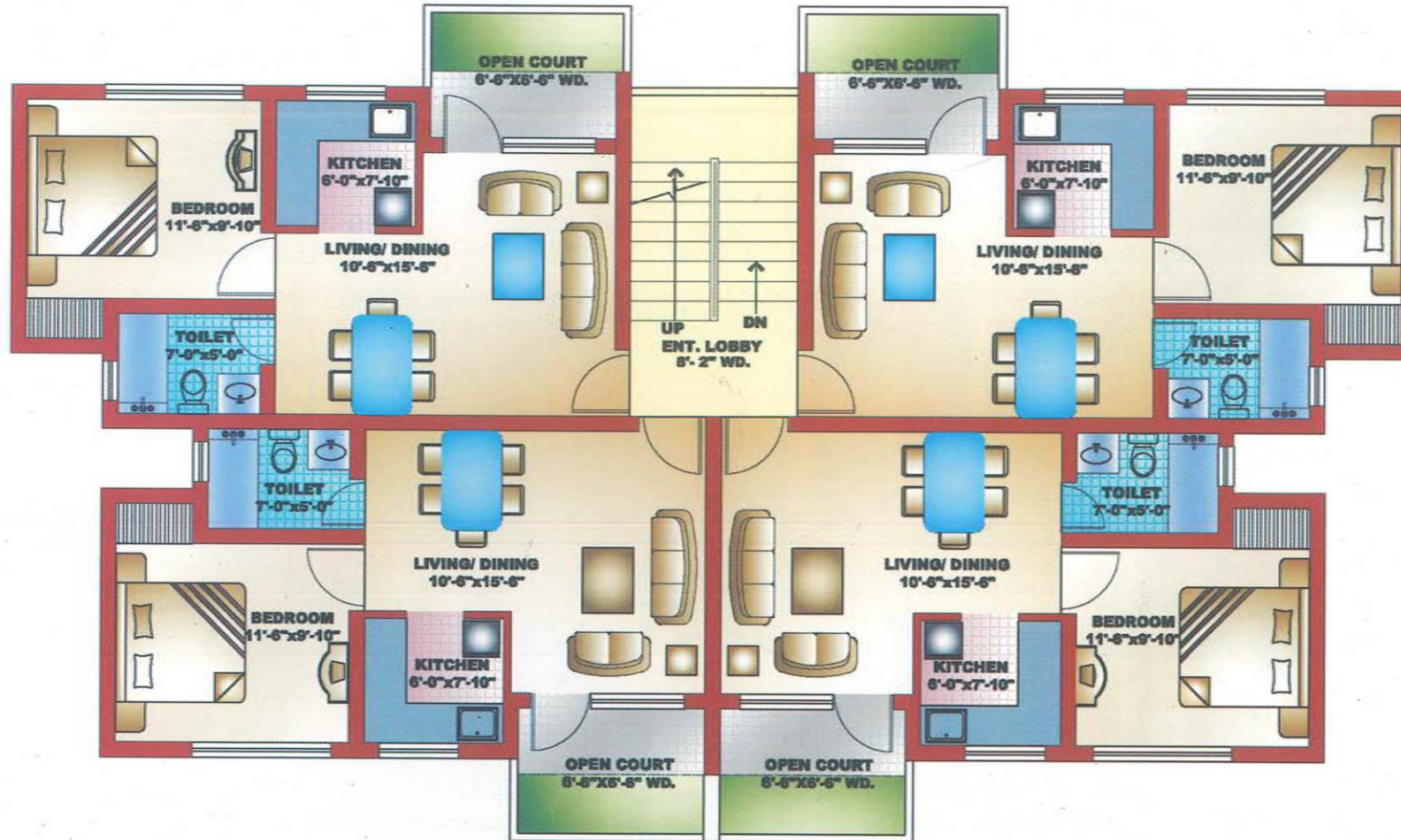


Note: (Open court shall only be with Ground Floor Unit)

TYPICAL UNIT PLAN (2 Bedroom Apartment)

Disclaimer : All Floor Plans specifications are indicative and are subject to change as decided by the Company or by the Competent Authority in the best interest of the development. Soft furnishing, cupboard, kitchen cabinet, furniture and gadgets if shown in the layouts are not the part of the offering.

TOTAL AREA OF ONE UNIT=50.58 SQM (544.21 SQFT)



Note: (Open court shall only be with Ground Floor Unit)

TYPICAL UNIT PLAN (1 Bedroom Apartment)

Disclaimer : All Floor Plans specifications are indicative and are subject to change as decided by the Company or by the Competent Authority in the best interest of the development. Soft furnishing, cupboard, kitchen cabinet, furniture and gadgets if shown in the layout/s are not the part of the offering.



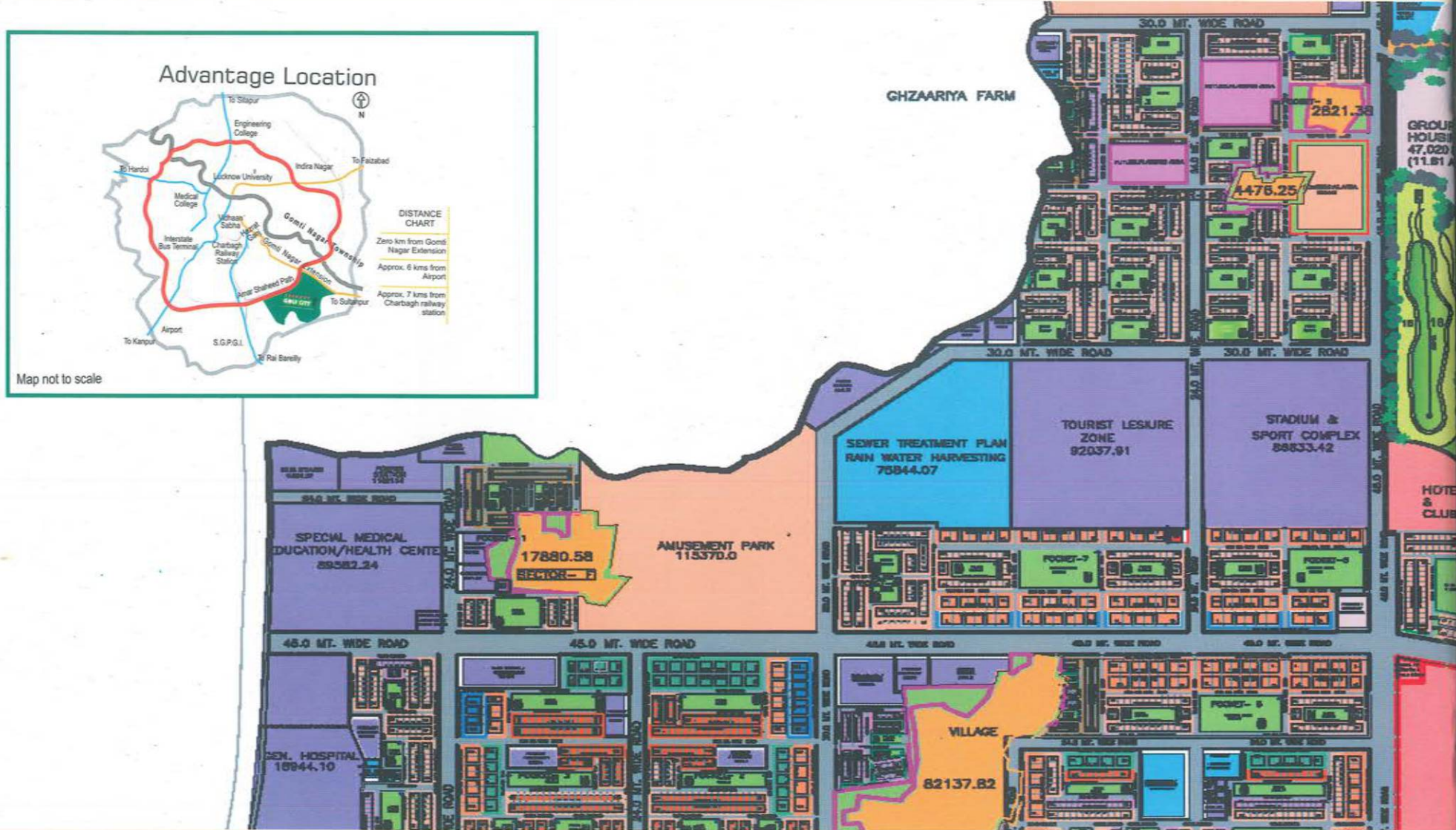
SITE PLAN

Disclaimer : All Floor Plans specifications are indicative and are subject to change as decided by the Company or by the Competent Authority in the best interest of the development. Soft furnishing, cupboard, kitchen cabinet, furniture and gadgets if shown in the layout/s are not the part of the offering.

SPECIFICATIONS

STRUCTURE		Load bearing structure.
LIVING ROOM	Flooring Walls Windows Doors	Aesthetic tiles / poly vinyl flooring. Plaster finished with Oil bound distemper. MS box section. MS box section frame along with flush doors.
BEDROOM	Flooring Walls Windows Doors	IPS / Mosaic. Plaster finished with dry distemper. MS box section. MS box section frame along with flush doors.
KITCHEN		Kotah stone counter. Provision of cold water supply.
TOILETS		Aesthetic tiles on walls and floors as per architectural design. Provision of cold water supply.
STAIRCASE		Treads finished in IPS / Mosaic.

LOCATION MAP





ansal API

Building lifestyles since 1967

Delhi Corporate Office:

115, Ansal Bhawan, 16 Kasturba Gandhi Marg, New Delhi 110001,
Tel: 011-23353550, 23352268/69/70, Fax: 66302261,
E-mail: info@ansalapi.com, Website: www.ansalapi.com

Meerut : Sushant City, Sector-3, Ved Vyas Puri Yozna, Delhi-Dehradun By Pass
Road, Near Subharti Dental College, Meerut-250103, Ph: 0121-2967264,
2967266

Lucknow: YMCA Campus, 13, Rana Pratap Marg, Lucknow- 226001.
Ph: 0522-2209511, 2207618

Agra: Block No. 50/1.5, Shop No. G1 & M1, Anupam Plaza-1. Sanjay Place,
Agra-282002. Ph: 0562 - 2522112, 4008716. Fax: 0562- 2522110

Aquapolis: NH-24, Ghaziabad, Doondahera.

Regional Offices:

Delhi & NCR: Faridabad, Gurgaon, Delhi, Greater Noida, Ghaziabad

Haryana: Karnal, Kurukshetra, Panipat, Sonapat

Punjab: Amritsar, Bhatinda, Jalandhar, Ludhiana, Mohali, Chandigarh

Rajasthan: Ajmer, Bhilwara, Jaipur, Jodhpur, Bikaner

Uttar Pradesh: Agra, Lucknow, Meerut

OVERSEAS REPRESENTATIVE

Dubai - Ankur Seth, Ph- 09811431034, E-mail: ankur@ansalapi.com

U.K - Axiom Estates, Mr. Merajalam - Ph: +4420303126087,

E-mail: meraj@axiomestates.com

USA - NRI Professional Group, Mr. Ashok Goyal, Add-2900 Gordonave, STE100,
Santa Clara, CA95051, Ph: 01-408-470-8325, Fax- 18663012619,

E-mail: sales@nrhouses.com

Australia - Concept Tree, Mr. Ashwin Tyagi, Ph: +91 99100 72597 (INDIA),

+61 402 928 728 (AUS), +61 1300 724 134, E-mail:

ashwin.tyagi@ctreeconsulting.com, ashwin.ctreeconsulting@yahoo.com

54545

SMS 'API' to 54545